



Smart options & accessories for desks and meeting tables

Opti is our smart range of easily accessible and user-friendly options & accessories for desks and meeting tables. Tested for the best possible ergonomics, and tested for maximum quality and safety. They provide the functionality you need and provide considered and well-designed solutions that contribute towards an organised environment. The range includes different solutions for cable management, which are flexible and easy to install, and which give a tidy look. There are also options for power and network outlets that are positioned to be close at hand.

Regardless of the type of working environment or meeting space, you can find a customised solution for connecting or charging. Our accessories also include ergonomic solutions that make your working day easier – such as, for example, CPU holders, relaxing armrests for your desk, and adjustable monitor arms.

Power and connection.....	2
Socket modules	5
Cable management.....	8
CPU Holders	14
Monitor arms.....	15
Other.....	16

MORE INFORMATION
kinnarps.com

Power & connection

Having technology close at hand and easily accessible with a tidy impression makes work easier and more efficient, both at the desk and in the meeting room. We have many variations of stylish and functional connections for power and charging, both concealed and visible. All are tried, tested and accredited by a third-party laboratory.



POWERBOX, PB667

Integrated into the table for easy access to electrical and network connections. Spacious compartment to conceal cables. Can also be closed when plugged in. Supplied with Wieland and an extension cord in several sizes.

Connections: 2 power sockets, 1 charging USB A and 1 USB C (total output 22W) and 1 optional module.

Dimensions: 294x170x60 mm

(Hole pattern: 279x155 mm)

Colour: Silver, black or white

Goes with: Serie P, Oberon, Nano, Nexus



POWERBOX, PB664

Integrated into the table for easy access to electrical and network connections. Spacious compartments to conceal cables. Can also be closed when plugged in. Delivered with Wieland and an extension cord in several sizes.

Connections: 3 power sockets and 1 optional module.

Dimensions: 294x170x60 mm

(Hole pattern: 279x155 mm)

Colour: Silver, black or white

Goes with: Serie P, Oberon, Nano, Nexus



POWER CLAMP, PCL2-S

Flexible and movable placement by mounting around the tabletop. For easily accessible electrical and network connection. Supplied with Wieland and an extension cord in several sizes.

Connections: 2 power sockets, 1 charging USB A and 1 USB C (total output 22W) and 1 optional module.

Dimensions: 241x85.5x88 mm

Colour: White

Goes with: Serie P, Oberon, Nano, Nexus and Polaris



CONFERENCE BOX SMALL, ACB1-S

Solid storage unit in sheet metal with a lid that can be opened in two directions. Space for electrical modules, multiway sockets and cables.

Dimensions: 335x150x155 mm

(Hole pattern: 302x134 mm)

Colour: Silver, black or white

Goes with: Serie e-one conference table, Oberon conference table, Nexus conference table and Multicom



CONFERENCE BOX LARGE, ACB1-L

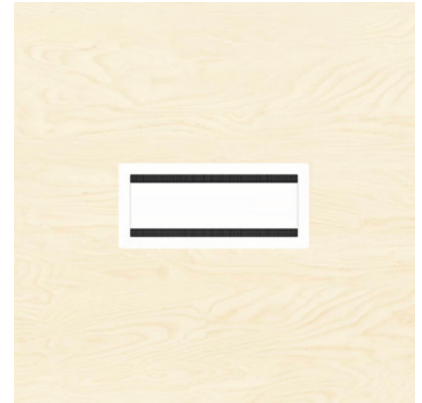
Solid storage unit in sheet metal with a lid that can be opened in two directions. Space for electrical modules, multiway sockets and cables.

Dimensions: 515x150x155 mm

(Hole pattern: 482x134 mm)

Colour: Silver, black or white

Goes with: Serie e-one conference table, Oberon conference table, Nexus conference table and Multicom



CONFERENCE LID SMALL, ACB2-S

Solid sheet metal lid that can be opened in two directions. Should be supplemented with a cable tray.

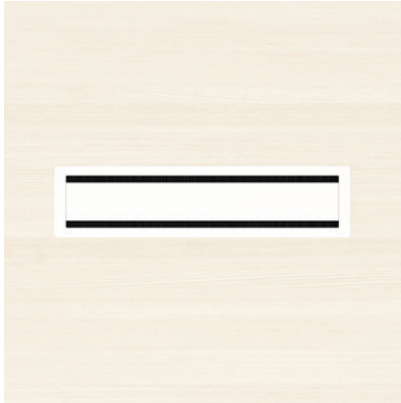
Dimensions: 335x150x42 mm

(Hole pattern: 302x134 mm)

Colour: Silver, black or white

Goes with: Serie e-one conference table, Oberon conference table, Nexus conference table

Power & connection



CONFERENCE LID LARGE, ACB2-L

Solid sheet metal lid that can be opened in two directions. Should be supplemented with a cable tray.

Dimensions: 515x150x42 mm
(Hole pattern: 482x134 mm)
Colour: Silver, black or white

Goes with: Serie e-one conference table, Oberon conference table, Nexus conference table



ELECTRICAL MODULE, APM1

Extension cable that fits in conference boxes ACB1-S, ACB1-L, etc. or in a separate cable tray.

Connections: 4 power sockets
Dimensions: 200x54x40 mm
Colour: Black

Goes with: Universal



ELECTRICAL MODULE, APM2

Extension cable that fits in conference box ACB1-L, etc. or in a separate cable tray.

Connections: 6 power sockets
Dimensions: 350x56x41 mm
Colour: Black

Goes with: Universal



ELECTRICAL MODULE, APM7

Flexible power and network module for placement in ACB1-S or ACB1-L conference box, etc. Supplied with Wieland and an extension cord in several sizes.

Connections: 2 power sockets, 1 charging USB A and 1 USB C (total output 22W) and 1 optional module.

Dimensions: 262x44x51 mm
Colour: Black/silver
Goes with: Universal



ELECTRICAL MODULE, APM4

Flexible electrical and network module for placement in conference boxes ACB1-S or ACB1-L, etc. Delivered with Wieland and an extension cord in several sizes.

Connections: 3 power sockets, 1 optional module.
Dimensions: 262x44x51 mm
Colour: Black / silver
Goes with: Universal



ELECTRICAL MODULE, APM8

Flexible power and network module for placement in ACB1-L conference box, etc. Supplied with Wieland and an extension cord in several sizes.

Connections: 4 power sockets, 1 charging USB A and 1 USB C (total output 22W) and 3 optional modules.
Dimensions: 443x44x51 mm
Colour: Black/silver
Goes with: Universal

Power & connection



COVER LID, ACM-A

A stylish lid that conceals holes without a module.

Colour: Black

Goes with: Goes with all of Kinnarps' configurable electrical modules in optional socket module.



SOCKET MODULE, ACM-B

The module contains 1 stereo port, 1 HDMI 2.0 port and 1 VGA port 3.5 mm stereo.

Colour: Black

Goes with: Goes with all of Kinnarps' configurable electrical modules in optional socket module.



SOCKET MODULE, ACM-C

The module contains 1 stereo port and 1 VGA port 3.5 mm stereo.

Colour: Black

Goes with: Goes with all of Kinnarps' configurable electrical modules in optional socket module.



SOCKET MODULE, ACM-D

The module contains 1 HDMI 2.0 port and 1 display port.

Colour: Black

Goes with: Goes with all of Kinnarps' configurable electrical modules in optional socket module.



SOCKET MODULE, ACM-EG1

The module contains 1 RJ45 2.0 port and 1 HDMI 2.0 port.

Colour: Black

Goes with: Goes with all of Kinnarps' configurable electrical modules in optional socket module.



CHARGING SOCKET MODULE, ACM-J

The module contains 1 charging USB A and 1 USB C (total output 22W).

Colour: Black

Goes with: Can be installed in Kinnarps' new APM7 power module, as well as in existing APM3, APM4 and APM5 power modules. Installed in the optional module. Can be retrofitted. Can be installed by customer. Power is connected at the back with the GST18 connection cable, available in several lengths.

Socket modules



SOCKET MODULE, ACM-EGH

The module contains 1 RJ45 port and 1 non-charging USB 3.0 port.

Colour: Black

Goes with: Goes with all of Kinnarps' configurable electrical modules in optional socket module.



SOCKET MODULE, ACM-EGG

The module contains 2 RJ45 ports.

Colour: Black

Goes with: Goes with all of Kinnarps' configurable electrical modules in optional socket module.



SOCKET MODULE, ACM-EHH

The module contains 2 non-charging USB 3.0 ports.

Colour: Black

Goes with: Goes with all of Kinnarps' configurable electrical modules in optional socket module.



SOCKET MODULE, ACM-EII

The module contains 2 HDMI 2.0 ports.

Colour: Black

Goes with: Goes with all of Kinnarps' configurable electrical modules in optional socket module.



SOCKET MODULE, ACM-EHI

The module contains 1 non-charging USB 3.0 port and 1 HDMI 2.0 port.

Colour: Black

Goes with: Goes with all of Kinnarps' configurable electrical modules in optional socket module.

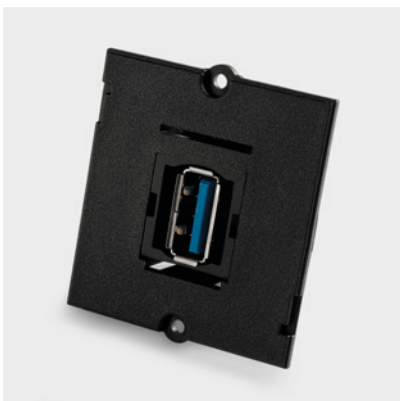


SOCKET MODULE, ACM-FG

The module contains 1 RJ45 port.

Colour: Black

Goes with: Goes with all of Kinnarps' configurable electrical modules in optional socket module.

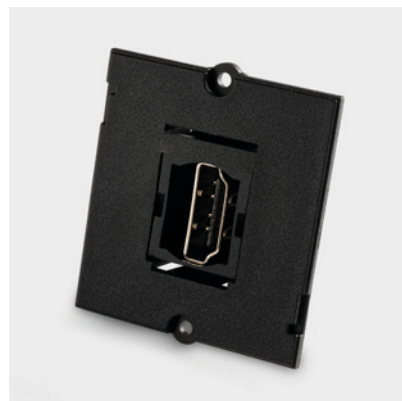


SOCKET MODULE, ACM-FH

The module contains 1 non-charging USB 3.0 port.

Colour: Black

Goes with: Goes with all of Kinnarps' configurable electrical modules in optional socket module.



SOCKET MODULE, ACM-FI

The module contains 1 HDMI 2.0 port.

Colour: Black

Goes with: Goes with all of Kinnarps' configurable electrical modules in optional socket module.

Socket modules



POWER TRAY, PT2T51

Decorative cover tray for Power Dot 51.
For 2 cable ports.

Connections: Optional installation of Power dot 51
Dimensions: 160x85x1.5 mm
Colour: Black or white
Goes with: Oberon, Nexus



POWER TRAY, PT3T51

Decorative cover tray for Power Dot 51.
For 3 cable ports.

Connections: Optional installation of Power dot 51
Dimensions: 235x85x1.5 mm
Colour: Black or white
Goes with: Oberon, Nexus



POWER DOT 51, T51PD1

Power sockets for placement in 51 mm holes.
Connection cable is included.

Dimensions: 51 mm (Ø 57 mm wide, 65 mm deep)
Colour: Black or white
Goes with: Universal



POWER DOT 51, T51PD3

Power socket for placement in 51 mm holes.
Connection cable is included.

Connections: 2 charging USB C (total output 30W)
Dimensions: 51 mm (Ø 57 mm wide, 65 mm deep)
Colour: Black or white
Goes with: Universal



POWER DOT 80, T80PGR

Power socket for placement in 80 mm hole.
The inner section can be twisted and lifted for
easy installation of other cables. Connection
cable is included.

Connections: 1 power socket, 4 cable ports
Dimensions: 80 mm
(Ø 83 mm wide, 49 mm deep)
Colour: Black or white
Goes with: Universal



WIRELESS CHARGING UNIT, T80WCU

Functional and elegant wireless charging with Qi
standard for mobile phones. The power is 5W.
Connection cable is included.

Dimensions: 80 mm
(Ø 94 mm wide, 20 mm deep)
Colour: Black
Goes with: Universal



Socket modules



POWER DOT 80, T80PD2

Power socket for placement in 80 mm hole. The inner section can be twisted and lifted for easy installation of other cables. Connection cable is included.

Connections: 1 power socket, 1 charging USB A (12W output), 1 USB C port with 60 cm cable for connection to external charger up to 60W output, 2 cable ports

Dimensions: 80 mm (Ø 83 mm wide, 68 mm deep)

Colour: Black or white

Goes with: Universal



POWER DOT 80, T80PD3

Power socket for placement in 80 mm hole. Inner section can be twisted and lifted for easy installation of other cables. 1 cable port.

Connection cable (x1) is included.

Connections: 1 power socket, 2 charging USB C (total output 30 W)

Dimensions: 80 mm (Ø 83 mm, 81 mm deep)

Colour: Black or white

Goes with: Universal



POWER DOT 80, T80PD4

Power socket for placement in 80 mm hole. 1 cable port with soft cover to lock cables into place. One GST18 connection cable, available in different lengths.

Connections: 1 power socket, 1 charging USB A and 1 USB C (total output 22W)

Dimensions: 80 mm (Ø 83 mm, 73 mm deep)

Colour: Black or white

Goes with: Universal



Cable management

Create clean work surfaces by collecting cables and power sockets. Keeping it tidy both above and below the table gives a clean and calm impression, thus making space for more creativity and productivity.



CABLE PORT, O300

For fixed placement in the tabletop. Lid and frame in anodized aluminium, should be supplemented with a cable tray.

Dimensions: 275x120x25.5 mm
(Hole pattern: 259x102 mm)

Colour: Silver

Goes with: Serie P, Oberon, Nano and Nexus



CABLE PORT, T80M

Stylish metal sleeve that is placed in a tabletop, 80 mm hole. A cable umbilical fixing with a removable lid.

Dimensions: 80 mm
(Ø 90 mm wide, 18 mm deep)

Colour: Silver

Goes with: Universal



CABLE PORT, T80

Cable port for placement in 80 mm holes. Round plastic sleeve with a three-part lid to accommodate different numbers of cables.

Dimensions: 80 mm
(Ø 88 mm wide, 22 mm deep)

Colour: Black, white or grey

Goes with: Universal



CABLE UMBILICAL GROMMET, T50

With edge cutout and plastic lid. For cable port and installation of accessories e.g. desktop screens and monitor arms.

Dimensions: 92x70x22 mm
Colour: Silver, black or white

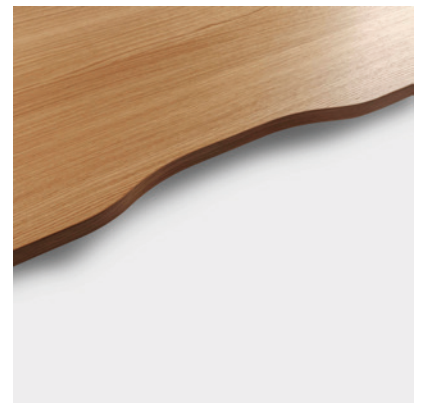
Goes with: Nano and Nexus



CABLE PORT, T97

Rectangular cutout in the tabletop with a durable plastic strip.

Dimensions: 97x35 mm
Colour: Silver, black or white
Goes with: Universal

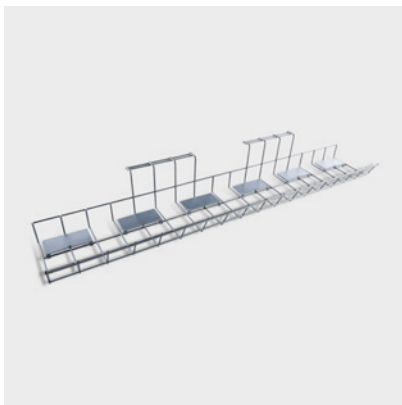


CABLE PORT SCALLOP, T430

A small cutout in the tabletop with lipping that gives the same elegant design as the rest of the table. Use for fasteners for e.g. monitor arms.

Dimensions: 430x35 mm
Colour: Matches the colour of the tabletop
Goes with: Goes with Nano bench and Nexus bench.

Cable management



CABLE TRAY, OACT3S

A simple and open solution for cable management with dividers and clips. Mounted directly in the tabletop.

Dimensions: 790x110x00 mm
(Distance from the underside of the cable tray to the underside of the tabletop: 105 mm)
Colour: Silver
Goes with: All desks, non-sliding tabletop



CABLE TRAY, EACT2S

A simple and open solution for cable management. Mounted directly in the tabletop.

Dimensions: 490x100x80 mm
(Distance from the underside of the cable tray to the underside of the tabletop: 84 mm)
Colour: Silver
Goes with: All desks, non-sliding tabletop



CABLE TRAY MESH, CTM

Spacious tray in mesh fabric that collects and conceals cabling. Fitted with little visibility between the table's beams.

Dimensions: Length 750 mm, width 730 mm
Colour: Black
Goes with: Nexus conference table



Cable management



CABLE TRAY, OBACT33

Fasteners are mounted on the beam. Can become conductive and shield electrical fields through earthing.

Dimensions: 330x132x69 mm. Available in the following lengths: 330, 530, 730, 930, 1230, 1530 mm. Distance from the underside of the cable tray to the underside of the tabletop: 130 mm. Colour: Black, white or silver
Goes with: Oberon



CABLE TRAY, OACT33

Single cable tray with fasteners that is mounted on the beam. Available in several lengths.

Dimensions: 330x132x69. Available in the following lengths: 330, 530, 730, 930, 1230, 1530 mm. Distance from the underside of the cable tray to the underside of the tabletop: 146 mm. Colour: Black, white or silver
Goes with: Serie e-one



CABLE TRAY, EACT33

Basic version that fits tables without sliding tabletops. Mounted directly in the tabletop.

Dimensions: 330x132x69. Available in the following lengths: 330, 530, 730, 930, 1230, 1530 mm. Distance from the underside of the cable tray to the underside of the tabletop: 146 mm. Colour: Grey, silver, white and black
Goes with: All desks, non-sliding tabletop



CABLE TRAY, POCCB1200

Sturdy cable tray mounted between the frame brackets. Large space for cables, multiway sockets and adapters and with inbuilt lid to conceal everything. There are cut-outs in the ends to hide any cables running between the units. Add POCCV to bring cables down vertically towards the table legs.

Dimensions: 1200x220x106 mm. Available in the following lengths: 1200, 1400, 1600, 1800, 2000 mm. Colour: Black, white or silver
Goes with: Polaris Duo



CABLE TRAY, TACT700, TACT400

For fixed mounting with screws directly in the tabletop. The fasteners are pre-mounted when ordered. Easy access as it can be opened from both the front and rear. Can be earthed to shield electrical fields.

Dimensions: 400 and 700x180x100. Distance from the underside of the cable tray to the underside of the tabletop: 100 mm. Colour: Black, white or silver
Goes with: All desks, non-sliding tabletop.



CABLE TRAY, ACT1-870

Stylish and discreet cable management that is attached to the beam. Can be unhooked and folded down on either side. The chamfered edge catches the branch sockets when folded down.

Dimensions: 870x150x52 mm. Available in the following lengths: 870, 1070, 1270, 1470, 1670 mm. Distance from the underside of the cable tray to the underside of the tabletop: 73 mm in the highest position, 98 mm in the lowest position. Colour: Black, white or silver
Goes with: Serie P

Cable management



CABLE TRAY, NACT1270

Discreet cable management, fastened to the beam and adjustable in two heights. Can be unhooked and folded down on either side. The chamfered edge catches the branch sockets when folded down.

Dimensions: 1270x150x52. Available in the following lengths: 270, 470, 670, 870, 1070, 1270, 1470, 1670, 2070 mm.

Distance from the underside of the cable tray to the underside of the tabletop: 73 mm in the highest position, 98 mm in the lowest position. Colour: Black, white or silver
Goes with: Nano, Nexus



CABLE TRAY, NBACT1052

Spacious cable tray that is laterally foldable for easy access. The fastener is mounted on the beam and the cable tray is hooked in place.

Dimensions: 1052x370x83. Available in the following lengths: 1052, 1252, 1452, 1652, 1852 mm. Distance from the underside of the cable tray to the underside of the tabletop: 123 mm.

Colour: Silver
Goes with: Nano and Nexus bench



CABLE TRAY, POACT870

Spacious and adjustable cable tray to collect cables and power sockets. The fastener is mounted on the beam. Easy to angle downwards in both directions or to unhook fully.

Dimensions: 870x150x52. Available in the following lengths: 870, 1070, 1270, 1470, 1670 mm. Colour: Black, white or silver
Goes with: Polaris



VERTICAL CABLE COLLECTOR, POCCV

Practical and vertical cable tray that leads the cables vertically downwards towards the cable outlet box in the flooring. Used together with cable tray POCB. Great option when access to the mains is from a floor box.

Dimensions: Height 407 mm
Colour: Black, white or silver
Goes with: Polaris Duo



CABLE COLLECTOR, NACC

Stylish and vertical cable collector in metal that attaches to round legs.

Dimensions: Height 490 mm, Ø 50 mm legs
Colour: Black, white or silver
Goes with: Nexus and Nano



CABLE COLLECTOR, NACCA

Stylish and vertical cable collector in metal that attaches to rectangular and square legs.

Dimensions: Height 568 mm, 50 mm square/rectangular legs
Colour: Black, white or silver
Goes with: Nexus and Nano

Cable management



CABLE HOLDER, A4CS

Flexible cable holders that close using Velcro. Sold in packs of 4.

Colour: Black
Goes with: Universal



CABLE HOLDER , OA3CC

Fasten the holder smoothly to the beam. Sold in packs of 3.

Colour: Grey
Goes with: Serie e-one



CABLE CLIPS, 1CH

A solution to get cables in order. Mounted on beam. Sold in packs of 4.

Colour: Black
Goes with: Oberon, Nano and Nexus



CABLE BOX, 1NEXCB

Spacious box for easy cable management. Height adjustment.

Dimensions: 346x103x552 mm
Colour: Black, white or silver
Goes with: Nexus and Nano bench



CABLE UMBILICAL, PAW110

Easily tidy up loose cables. The umbilical is made of plastic and is mounted directly into the tabletop. Can be fastened horizontally under tables, or down to the floor. Can be joined together. For normal table height.

Dimensions: Length 1100 mm
Colour: Black
Goes with: All tables at sitting height



CABLE UMBILICAL, PAW130

Easily tidy up loose cables. The umbilical is made of plastic, has a foot, and is mounted directly into the tabletop. Can be fastened horizontally under tables, or down to the floor. Can be joined together. For higher table heights.

Dimensions: Length 1300 mm
Colour: Black
Goes with: All sit & stand tables

Cable management



CABLE RISER, EAR

Stylish, fabric-covered solution made of conductive material to gather cables. Two separate plastic channels inside. Zip on the outside. Can be connected to the floor, ceiling or wall.

Dimensions: Length 800 mm

Colour: Dark grey

Goes with: All tables at sitting height



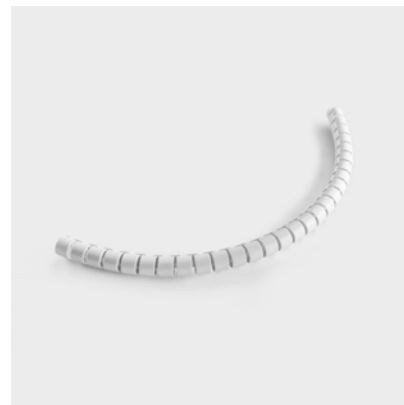
CABLE RISER, EAR SS

Stylish, fabric-covered solution made of conductive material to gather cables. Two separate plastic channels inside. Zip on the outside. Can be connected to the floor, ceiling or wall.

Dimensions: Length 1350 mm

Colour: Dark grey

Goes with: All sit & stand tables



CABLE COLLECTOR, EACC, EACC30

Simple solution for collecting cables. The collector is made of plastic, and the diameter of 20 mm holds 4-6 cables. Sold in lengths per 3 metre intervals.

Dimensions: EACC 3 metre interval,

EACC30 30 metres

Colour: Light grey

Goes with: Universal



TOOL FOR CABLE COLLECTOR, EACCT

Used in combination with cable collector EACC, EACC30. Simplifies the feeding of cables through the plastic pipe.



CPU Holders

A clean and professional impression provides a pleasant working environment. Fasten the computer under the tabletop to create free space, which makes it easy to keep your desk and floor tidy. It also helps you to avoid annoying noise from the computer.



CPU HOLDER 1F, EACH1F, OACH1F

A wide strap around the computer provides a stable vertical suspension. The bracket is mounted on the table top or on the beams. Some models cannot be mounted on tables with sliding tops. Rotating Does not fit tables with a sliding tabletop. Not lockable. For OACH1F, mount the fastener on the beam.

Dimensions: Max. dimensions of computer 500x225 mm. Minimum computer dimensions 257x90 mm.

Max. weight: 20 kg

Colour: Silver

EACH1F

Goes with: Serie e-one, Serie P and Oberon

OACH1F

Goes with: Serie e-one



CPU HOLDER 1 EACH1, NACH1, OACH1, OBACH1

A wide strap around the computer provides a stable vertical suspension. The bracket is mounted on the table top or on the beams. Some models cannot be mounted on tables with sliding tops. Height adjustment. Easy to rotate and slide forwards or backwards. Does not fit tables with a sliding tabletop. Not lockable.

Colour: Silver

Max. weight: 20 kg

EACH1

Dimensions: Max. dimensions of computer 500x225 mm. Minimum computer dimensions 257x90 mm.

Goes with: Serie e-one, Serie P and Oberon

NACH1

Dimensions: Max. dimensions of computer 460x240 mm. Minimum computer dimensions 257x90 mm.

Goes with: Nano and Nexus

OACH1, OBACH1

Dimensions: Max. dimensions of computer 500x225 mm. Minimum computer dimensions 257x90 mm.

Goes with: Serie e-one and Oberon



CPU HOLDER 5 EACH5, NACH5, OACH5, OBACH5

Simple vertical suspension of a computer with two dark grey straps. The bracket is mounted on the table top or on the beams. Some models cannot be mounted on tables with sliding tops. Possible to adjust the height, slide forwards and backwards, and rotate. Not lockable. EACH5 does not fit tables with sliding tabletops. For NACH5 and OACH5, the fastener is mounted in the beam.

Colour: Silver

Max weight: 15 kg

EACH5

Dimensions: Max. dimensions of computer 510x240 mm. Minimum computer dimensions 200x90 mm.

Goes with: Serie P, Oberon and Polaris

NACH5

Dimensions: Max. dimensions of computer 480x240 mm. Minimum computer dimensions 200x90 mm.

Goes with: Nano and Nexus

OACH5, OBACH5

Dimensions: Max. dimensions of computer 480x240 mm. Minimum computer dimensions 200x90 mm.

Goes with: Serie e-one and Oberon



Monitor arms

During your work day, you spend a lot of your time in front of the computer screen. This makes functionality and customisation important. Tilt, rotate and move the screen to easily position it exactly where you want it.



MONITOR ARM, TA50M

Can be swivelled or rotated. Mounted with a clamp in the tabletop. A quick monitor fastener is included and can be supplemented with an iPad holder. Integrated cable channel in the first part of the arm. Fastener: VESA 75/100.

Dimensions: Max. length 457 mm.
Height adjustable 341 mm.
Load: 9 kg
Colour: Silver or white
Goes with: Universal



MONITOR ARM, TA61M

Four-jointed single arm. With a clamp for mounting on tabletops. Can be swivelled or rotated.

Dimensions: Max. length 500 mm,
max. height 370 mm
Max. weight: 14 kg
Colour: Silver or white
Goes with: Universal



MONITOR ARM, TA62M

Four-jointed duo arm. With a clamp for mounting on tabletops. Can be swivelled or rotated. Provides limited setting options together with a desktop screen.

Dimensions: Max length 890 mm,
max height 370 mm
Max. weight: 14 kg
Colour: Silver or white
Goes with: Universal



GAS MONITOR ARM, TA71M, TA7151

Single arm with gas suspension that allows the screen to move around effortlessly. With a clamp for mounting on tabletops. Fastener for mounting in 51 mm diameter holes. Can be swivelled or rotated.

Dimensions: Max. length 542 mm,
max. height 510 mm
Load: 3-8 kg
Colour: Black, white or silver
Goes with: Universal



GAS MONITOR ARM HEAVY TA71HM, TA71H51

Single arm with gas suspension that allows the screen to move around effortlessly. Withstands heavier loads. With a clamp for mounting on tabletops. Fastener for mounting in 51 mm diameter holes. Can be swivelled or rotated.

Dimensions: Max. length 640 mm,
max. height 580 mm
Load: 8-19 kg
Colour: Silver or white
Goes with: Universal



GAS MONITOR ARM TA72M, TA7251

Duoarm with gas suspension that allows the screen to move around effortlessly. With a clamp for mounting on tabletops. Fastener for mounting in 51 mm diameter holes. Can be swivelled or rotated. Provides limited setting options together with a desktop screen.

Dimensions: Max. length 1000 mm,
max. height 510 mm
Load: 3-8 kg per arm
Colour: Black, white or silver
Goes with: Universal

Monitor arms



GAS MONITOR ARM HEAVY TA72HM, TA72H51

Arm with gas suspension and equipped with twinbar for mounting two monitors in parallel. Withstands heavier loads. With a clamp for mounting on tabletops. Also with fastener for mounting in 51 mm diameter holes. Can be swivelled or rotated. Provides limited setting options together with a desktop screen.

Dimensions: Max. length 790 mm,
max. height 580 mm
Load: 8-19 kg
Colour: Silver or white
Goes with: Universal



TWINBAR, TAB71

Separate Twinbar for monitor arm TA71H.
For retrofitting to make room for two monitors.

Dimensions: Max. length 790 mm,
max. height 580 mm
Load: 17 kg
Colour: Silver or white
Goes with: TA71H51, TA71HM

Other

Our range includes several attractive office accessories that provide better ergonomics and more simplicity, which helps you to achieve a more efficient work situation.



TABLETOP STORAGE, TAR0180

Achieve a tidy impression on your desk by storing small items such as pens and post-it blocks under the tabletop. Easy to twist forward if necessary. Mounted on tabletops without a frame.

Dimensions: Length 339 mm,
width 200 mm and height 34 mm.
Colour: Black
Goes with: Universal



ARMREST, EAAR

Relief for forearm. Provides better ergonomics when working frequently between keyboard and mouse. Easy to clean. In artificial leather and adjustable metal fasteners (thickness of tabletop 10-40 mm).

Dimensions: Length 680 mm
Colour: Black
Goes with: Universal



EARTHING SET, EATE

Earthing cable trays, baskets, or socks to reduce alternating electrical fields. Includes a plug connection and ten earthing cables.

Goes with: All metal cable trays